



**WESTERN BLENDED
PRODUCTS**
The Plasterer's Standard

WES EIFS 24

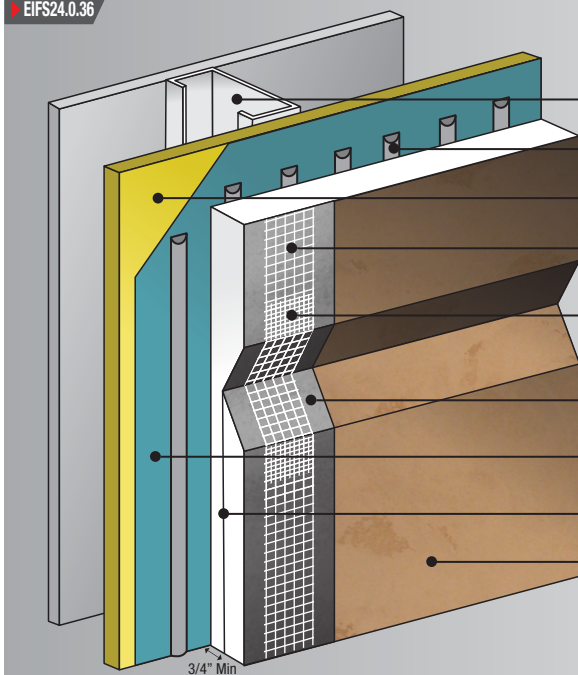
An Exterior Insulated Wall System with Moisture Drainage.

Installation Details

■ Terminations

WES EIFS 24 Systems must comply with local building codes and applicable standards. Details shown in this document are for guidance and informational purposes only. Western Exterior Systems disclaims any liability regarding the use of these drawings and document for any project purpose. The designer of the project determines the functionality equivalency of these details and how these are suited for the project. Installation details may change with time. Please contact Western Exterior Systems for more information.

EIFS24.0.36



• Uneven Finished Surface - Reveals - Example 1

Approved Framing

WES BPS 24 - Cementitious Adhesive
(Applied Vertically with Notched Trowel)

Approved Substrate

Reinforcing Mesh - Embedded

Detail Mesh - Overlapped 2"

WES BPS 24 - Basecoat

WES Weather Guard - Weather Barrier

Approved EPS Insulation Board

PAF Finish Coat

• Uneven Finished Surface - Reveals - Example 2

EIFS24.0.37

Approved Framing

WES BPS 24 - Cementitious Adhesive
(Applied Vertically with Notched Trowel)

Approved Substrate

Reinforcing Mesh - Embedded

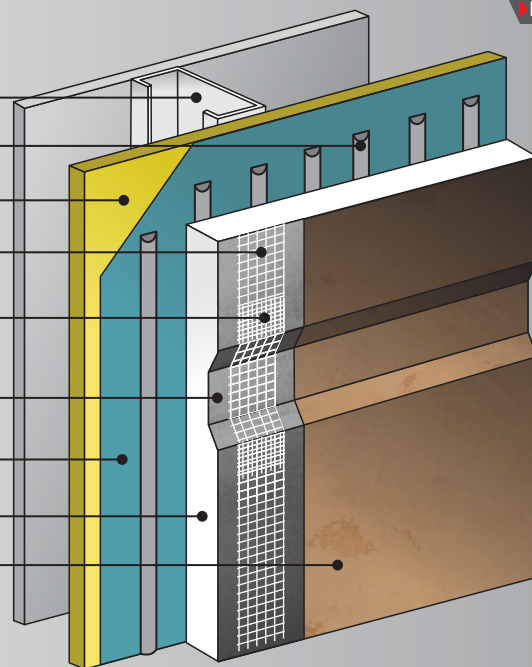
Detail Mesh - Overlapped 2"

WES BPS 24 - Basecoat

WES Weather Guard - Weather Barrier

Approved EPS Insulation Board

PAF Finish Coat



April 2018

WES EIFS 24 Installation Details - Page 23

Sacramento Stucco Co.
1550 Parkway Blvd. West Sacramento, CA 95691 / (916) 372-7442
Western Stucco Co.
6101 N. 53rd. Drive Glendale, AZ 85311 / (623) 939-9455
Rio Grande Stucco Co.
9151 Roseway Drive El Paso, TX 79907 / (915) 858-3494

Visit us on the web:
westernblended.com



Western Blended Products are manufactured in the U.S.A. utilizing the strictest quality control processes to ensure consistent, high-performance products on every project.

